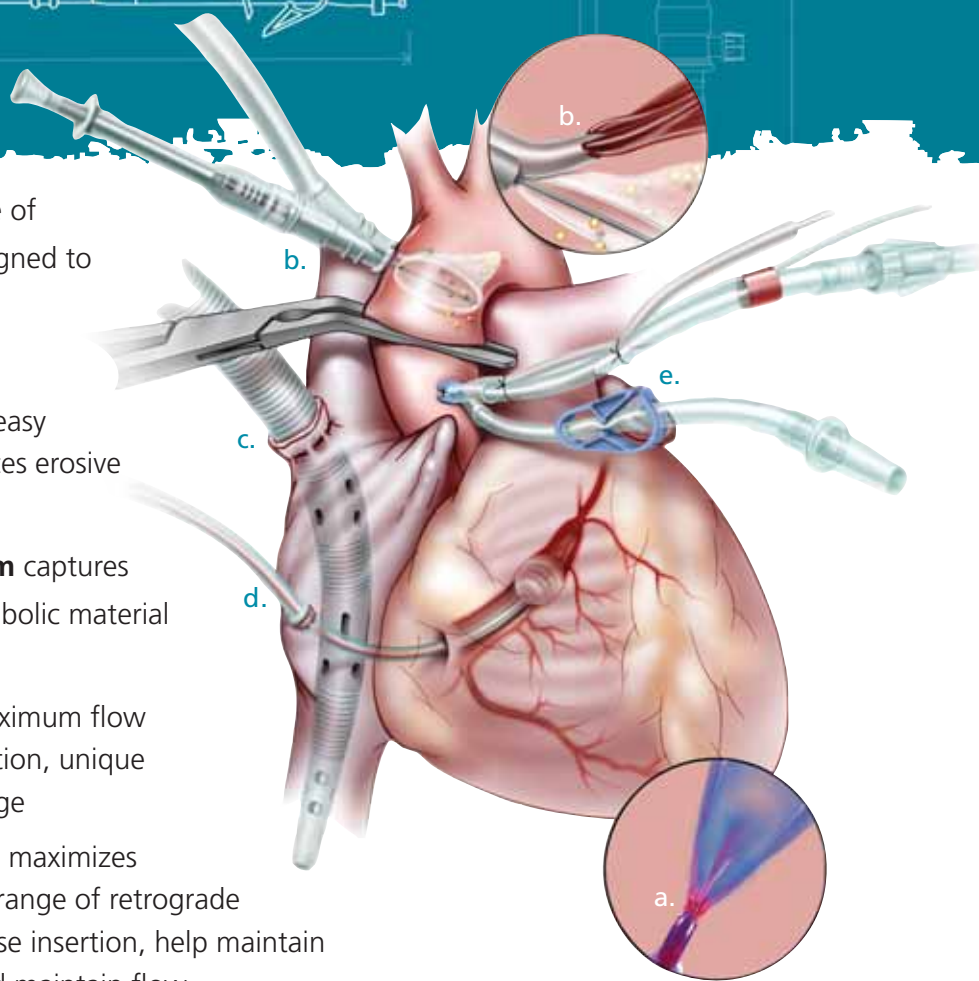


Advanced Technologies for Patient Protection

Edwards has developed a unique line of cannulae with innovative features designed to improve patient protection.

Central cannula procedures:

- a. EZ Glide aortic cannula** provides easy insertion, centralized flow and minimizes erosive wall impact
- b. EMBOL-X Glide protection system** captures and removes potentially dangerous embolic material before it can travel to end organ
- c. AViD venous cannula** provides maximum flow through proprietary thin-wall construction, unique tip-hole design and three-stage drainage
- d & e. Global Myocardial Protection** maximizes cardioplegia coverage offering a wide range of retrograde (d) and antegrade (e) cannulae that ease insertion, help maintain position throughout the procedure and maintain flow



Model No.	Description
a. EZC21A	21 Fr. aortic cannula with suture bump
b. EXGF24MMD	EMBOL-X Glide protection system with medium filter
c. TF293702	29/37 Fr. triple-stage venous cannula
d. RC2014	14 Fr. retrograde cannula with self-inflating balloon, Retractableguard and Buckberg handle
e. ATC011MV	9 Fr. antegrade cannula with 11-gauge insertion needle, pressure monitoring and vent lines

Note: All featured products are available in a variety of sizes and configurations to accommodate a wide range of patients and surgeon preferences.

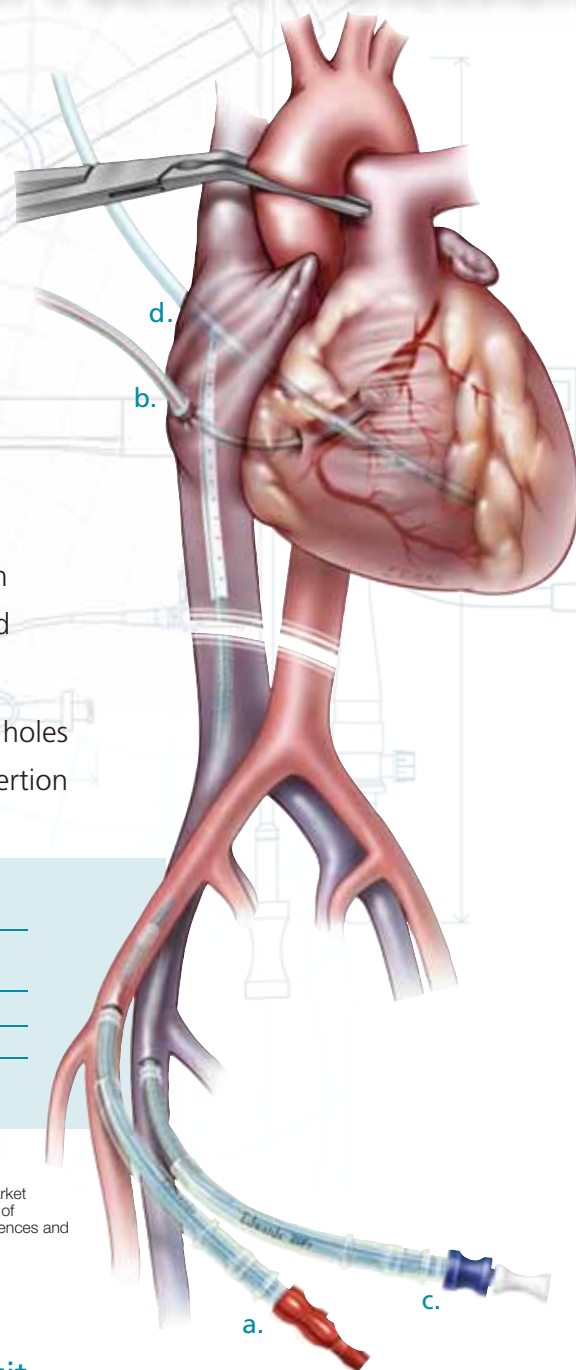


Edwards
LIFESCIENCES

Advanced Technologies for Patient Protection

Edwards offers a wide range of innovations for minimally invasive techniques requiring peripheral cannulation:

- a. Femoral arterial cannula** offers proprietary thin-wall construction that enhances flow and improves flexibility, a wire-reinforced polyurethane body to prevent kinking and an atraumatic design tapered tip
- b. Retrograde cardioplegia cannula with Retractableguard** offers a broad range of balloon styles, cannula and stylet options that aid insertion and increase retention while ensuring a smooth flow of cardioplegia for myocardial protection
- c. Femoral venous cannula** addresses challenging anatomies with wire-reinforced design, dilator lock, smooth insertion and enhanced flow characteristics
- d. Vent cannula** offers a soft silicone body with multiple drainage holes that enhance venting and a shapeable guidewire stylet for easy insertion



Model No.	Description
a. FEM11018A	18 Fr. femoral arterial cannula
b. RC2012M	12 Fr. retrograde cannula with Retractableguard, self-inflating balloon and malleable stylet
c. VFEM024	24 Fr. venous femoral cannula with locking introducer
d. E063	20 Fr. silicone vent with malleable stylet

Note: All featured products are available in a variety of sizes and configurations to accommodate a wide range of patients and surgeon preferences.

Rx only. See instructions for use for full prescribing information. Edwards Lifesciences devices placed on the European market meeting the essential requirements referred to in Article 3 of the Medical Device Directive 93/42/EEC bear the CE marking of conformity. Edwards, EMBOL-X Glide and EZ Glide are trademarks of Edwards Lifesciences Corporation. Edwards Lifesciences and the stylized E logo are trademarks of Edwards Lifesciences Corporation and are registered in the US Patent and Trademark Office. © 2007 Edwards Lifesciences LLC. All rights reserved. APXXXXX

To put Edwards innovation to work for your patients, visit www.Edwards.com or call 800-424-3278



Edwards Lifesciences

Edwards Lifesciences LLC · One Edwards Way · Irvine, CA 92614 USA · 949.250.2500 · 800.424.3278 · www.edwards.com
Edwards Lifesciences (Canada) Inc. · 1290 Central Pkwy West, Suite 300 · Mississauga, Ontario · Canada L5C 4R3 · 905.566.4220 · 800.268.3993
Edwards Lifesciences S.A. · Ch. du Glapin 6 · 1162 Saint-Prex · Switzerland · 41.21.823.4300
Edwards Lifesciences Japan · 2-8 Rokubancho · Chiyoda-ku, Tokyo 102-0085 · Japan · 81.3.5213.5700 · www.edwards.com/Japan